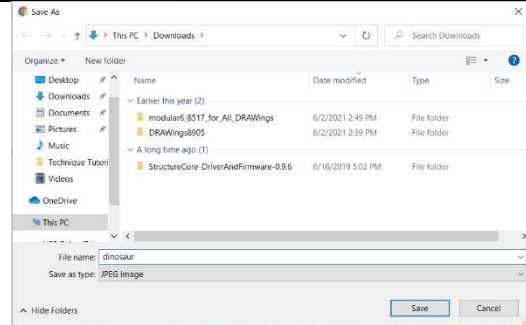


Embroidery Software – Image Tracing

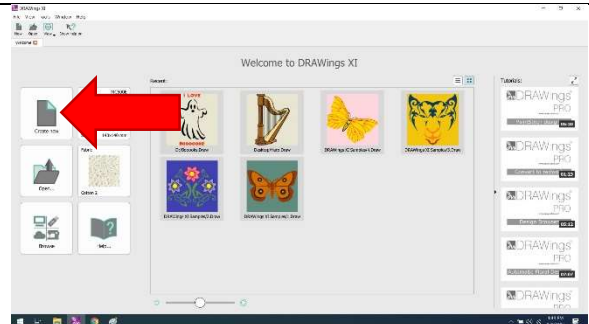
Step 1: Find and save an image

- See Technique Tutorial “Searching for and Saving Images” for assistance.
- Designs without a lot of complicated shading generally work best for embroidery.



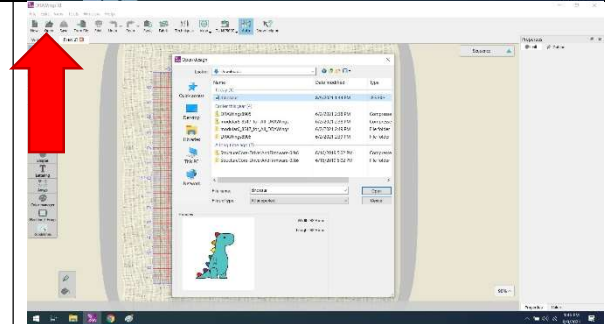
Step 2: Open a new embroidery design

- From the home screen of the DRAWings Pro XI software, select “Create new.”



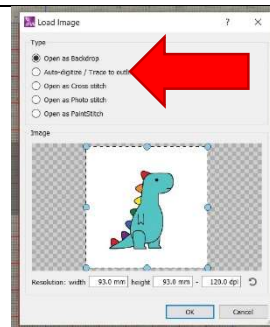
Step 3: Open the saved image

- Click on the “Open” icon.
- In the dialog box that opens, find and open your image file.



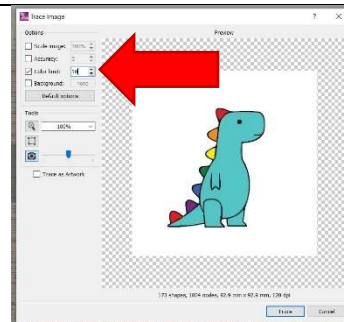
Step 4: Select “Auto-digitize / Trace to outlines”

- In the dialog box that opens, click on the second option, “Auto-digitize / Trace to outlines.”



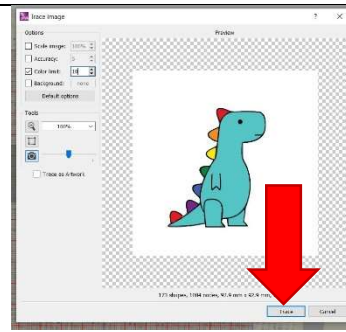
Step 5: Limit colors if desired

- To avoid ending up with a design with hundreds of colors, check the “Color Limit” box, and then enter the maximum number of colors you want in the box next to it.



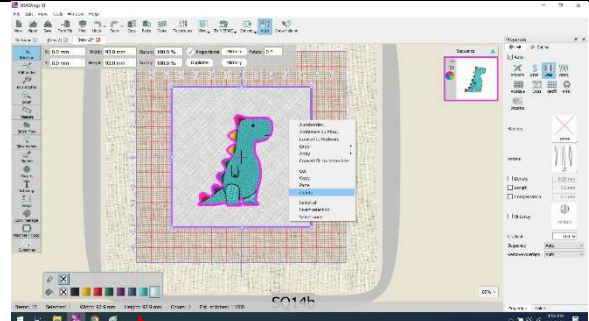
Step 6: Trace the image

- Click the “Trace” button to complete the trace.



Step 7: Edit the image

- In the example here the software included the white background of the image as part of the embroidery design. To get rid of a piece you do not want, click on it, then right-click and select “Delete.”



Step 8: Remove the background image if desired

- The software imports the original image as well as the embroidery file. If the image is distracting, you can hide it.
- From the icons along the top of the screen, click on “View,” then “Backdrop,” then “Hidden.”

