

Embroidery Software – Saving to USB

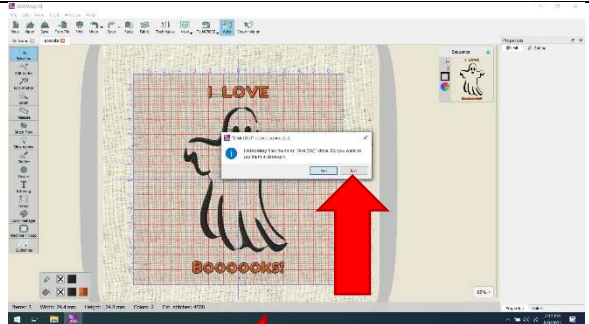
Step 1: Insert the USB drive into the laptop

- Remove the USB drive from the embroidery machine and insert it into the laptop.
- The embroidery machine will only read specially-formatted USB drives, so the file must be saved onto that specific USB drive.



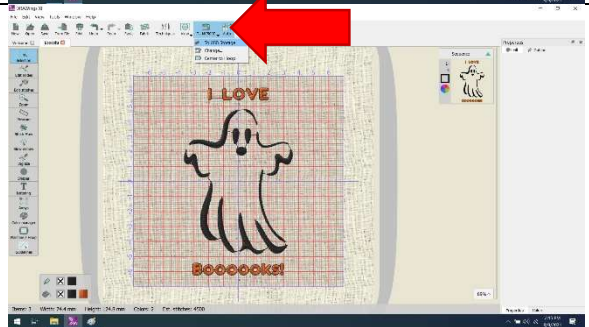
Step 2: Dismiss the pop-up window

- A window will pop up asking if you want to see the files on the drive. Click on “No.”



Step 3: Open the dialog box

- From the icons along the top of the screen, click on “To MC500E.”
- From the drop-down menu, select “To USB Storage.”



Step 4: Navigate to the proper folder

- In the pop-up window, click on “D:” from the left-hand column, and then double-click on “EMBF” in the right-hand column.



Step 5: Name your file

- Click in the “File name” box and type your file’s name.
- When finished, click “Export.” Your file is now saved on the USB drive.

