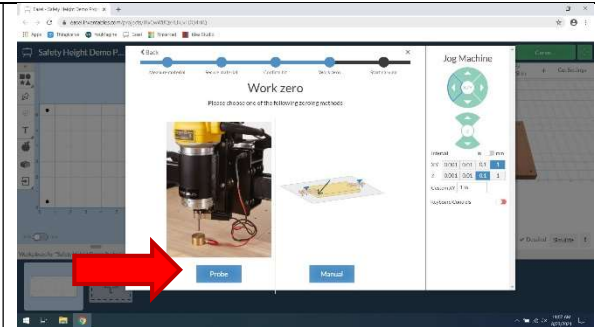


## X-Carve – Using the Z-Probe

### Step 1: Choose the “Probe” option

- In the “Work zero” screen when you are preparing to carve, click on “Probe”.



### Step 2: Remove the dust shoe

- Slide the dust shoe out of its rails and set it out of the way.



### Step 3: Jog the router head over top of the material

- Following the instructions in the Easel screen, use the controls in Easel to jog the router head over until it is above the clamped material.
- Click “Confirm position” in the Easel screen.



### Step 4: Plug the lead into the carriage

- Take the plug-end of the Z-Probe and insert it into the socket on the upper right-hand corner of the router carriage.
- Easel will detect that you have plugged it in and advance to the next item on the screen without your needing to click on anything.



### Step 5: Attach the clip to the collet

- Put the clip-end of the Z-probe onto the collet nut.
- Click “Clip is attached” in the Easel screen.



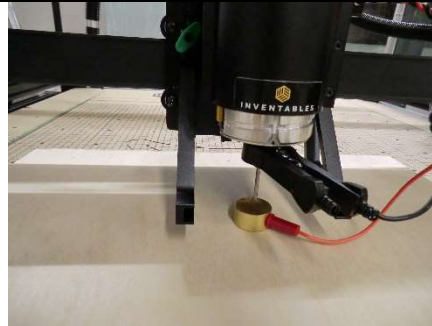
#### Step 6: Touch the plate to the bit

- Touch the round brass touch plate to the end of the bit and hold it there for a second or two
- Easel will detect contact and advance to the next item on the screen without your needing to click on anything.
- If Easel does not detect contact, be sure your leads and clip are properly attached and try again.



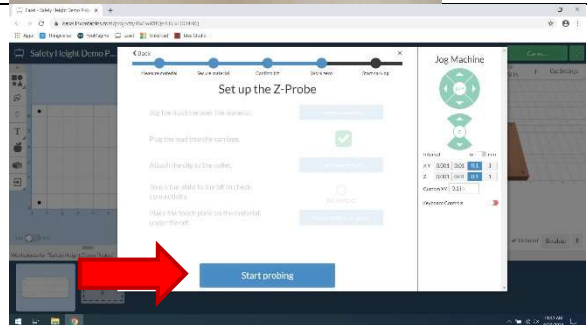
#### Step 7: Position the touch plate

- Set the round brass touch plate on the clamped material under the bit, so that when the bit lowers it will touch the plate.
- Click "Touch plate is in place" on the Easel screen.



#### Step 8: Start probing

- Click "Start probing" on the Easel screen.
- The bit will slowly lower until it touches the brass plate.
- Watch to be sure the clip is not going to bump into the dust shoe rails and that the brass touch plate is indeed directly under the bit.



#### Step 9: Put the Z-Probe away

- When the probing is finished, remove the clip, unplug the leads, and put the Z-Probe away.

